

About Us

The Beams is a new, expansive venue and event space in London. The incredible 9,500 square metre site offers a raw, industrial destination, comprising three distinct interior spaces and a large outside courtyard.

Formerly part of the “sugar mile”, The Beams has given this section of East London’s historic Royal Docks a new lease of life, becoming the latest centre for culture in the Capital. The location is easily accessible by the DLR and is only a short distance from London City Airport.

The venue is defined by a range of beautiful architectural features, including the eponymous roof beams after which it is named, while original factory-style windows flood the main space with beams of natural light.

The Beams promises to create a spotlight on culture in all its forms. Forming a flexible and inspiring environment, which provides an unrivalled landscape for filming, photo shoots, music, cultural events, brand events, large-scale set builds, exhibitions, fashion shows and the arts.



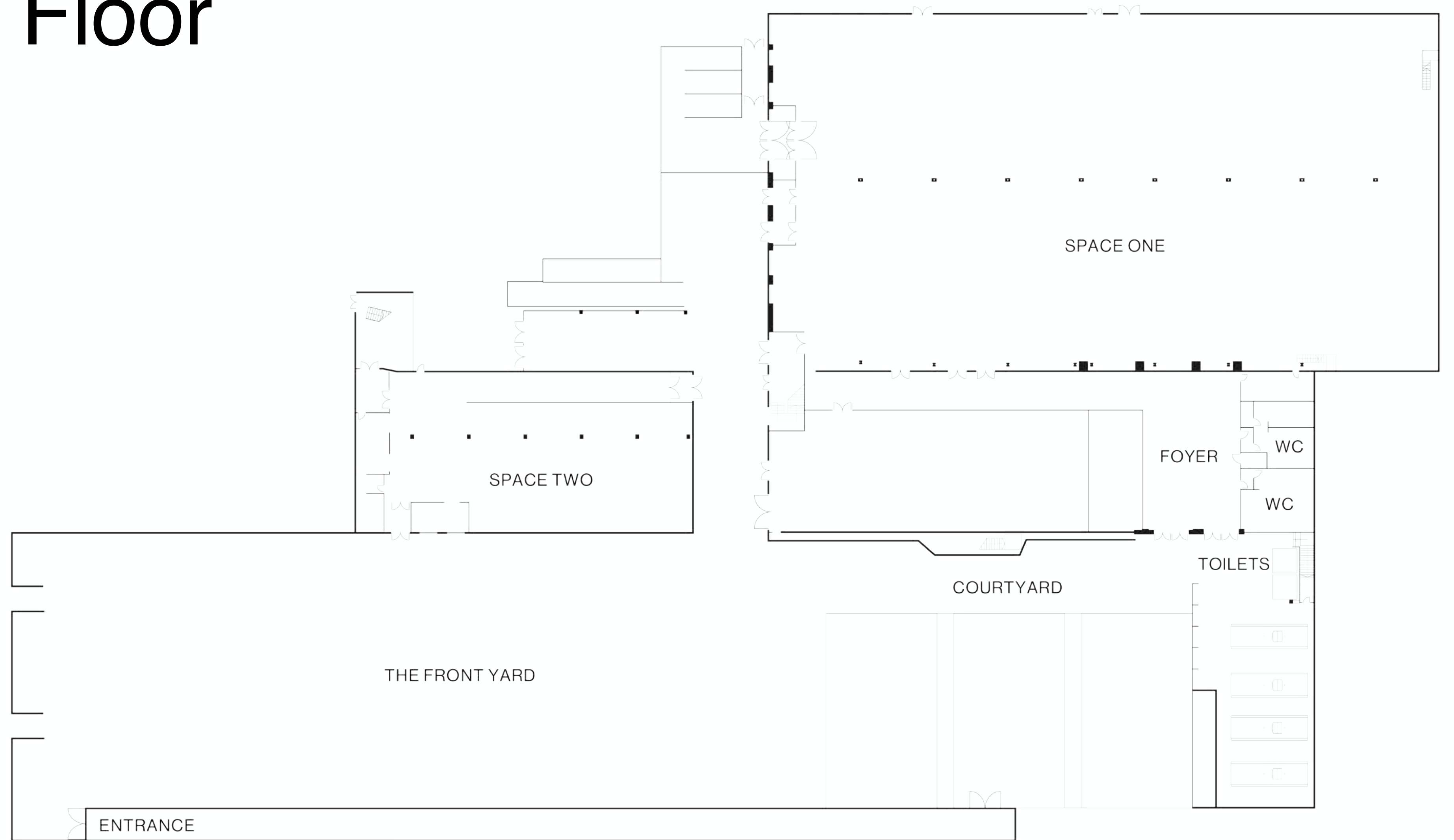
Specifications

SPACES	L(M)	W(M)	H(M)	SQ,M	STANDING	THEATRE	DINNER	CABARET
Space One	68.4	36.6	6.5	2,468	4,000	2,652	1,810	1,086
Space Two	31.1	16.4	4.1	495	800	495	320	192
Space Three	23.3	12	3-3.9	327	300	300	220	132
Courtyard	-	-	-	893	1,000	-	-	-
The Front Yard	-	-	-	5,326	-	-	-	-

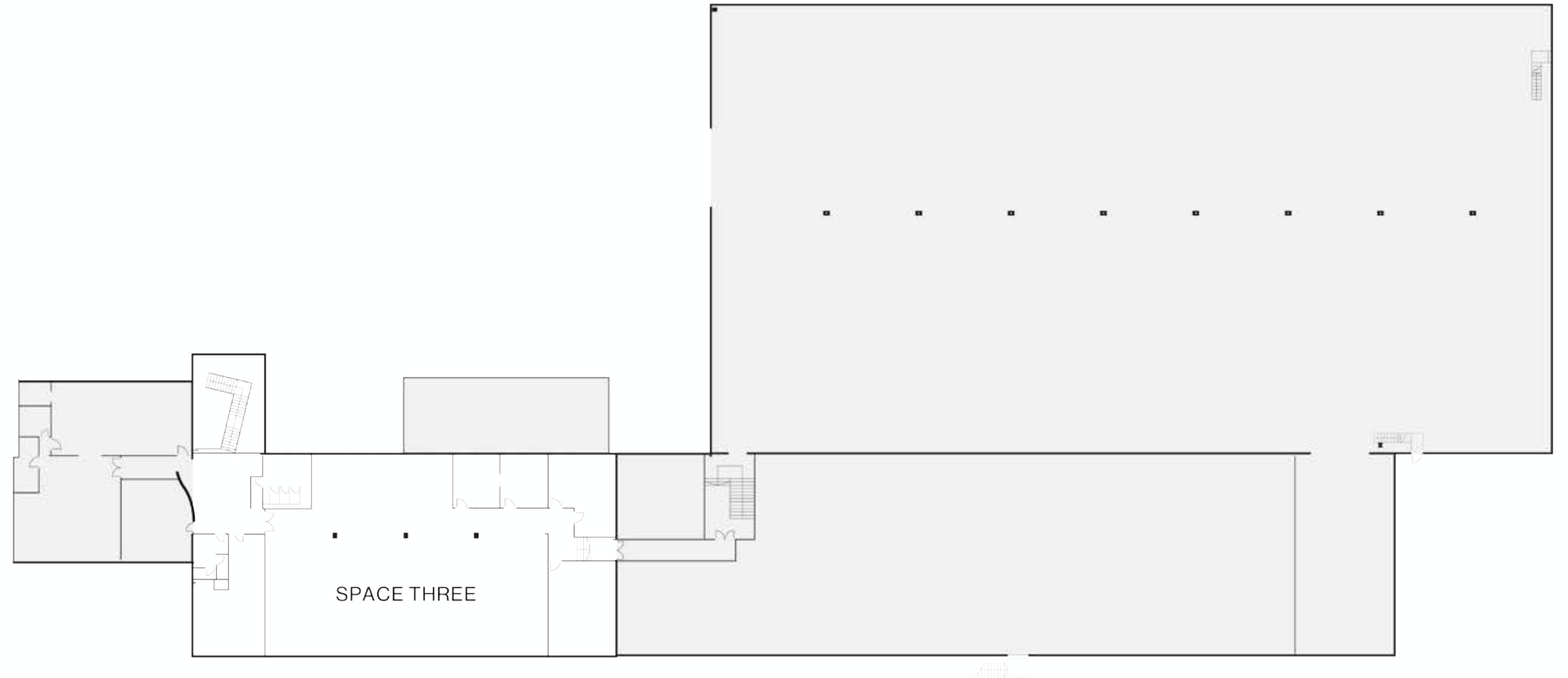
*Individual space capacities are subject to seating, production, event activities and fire exits.

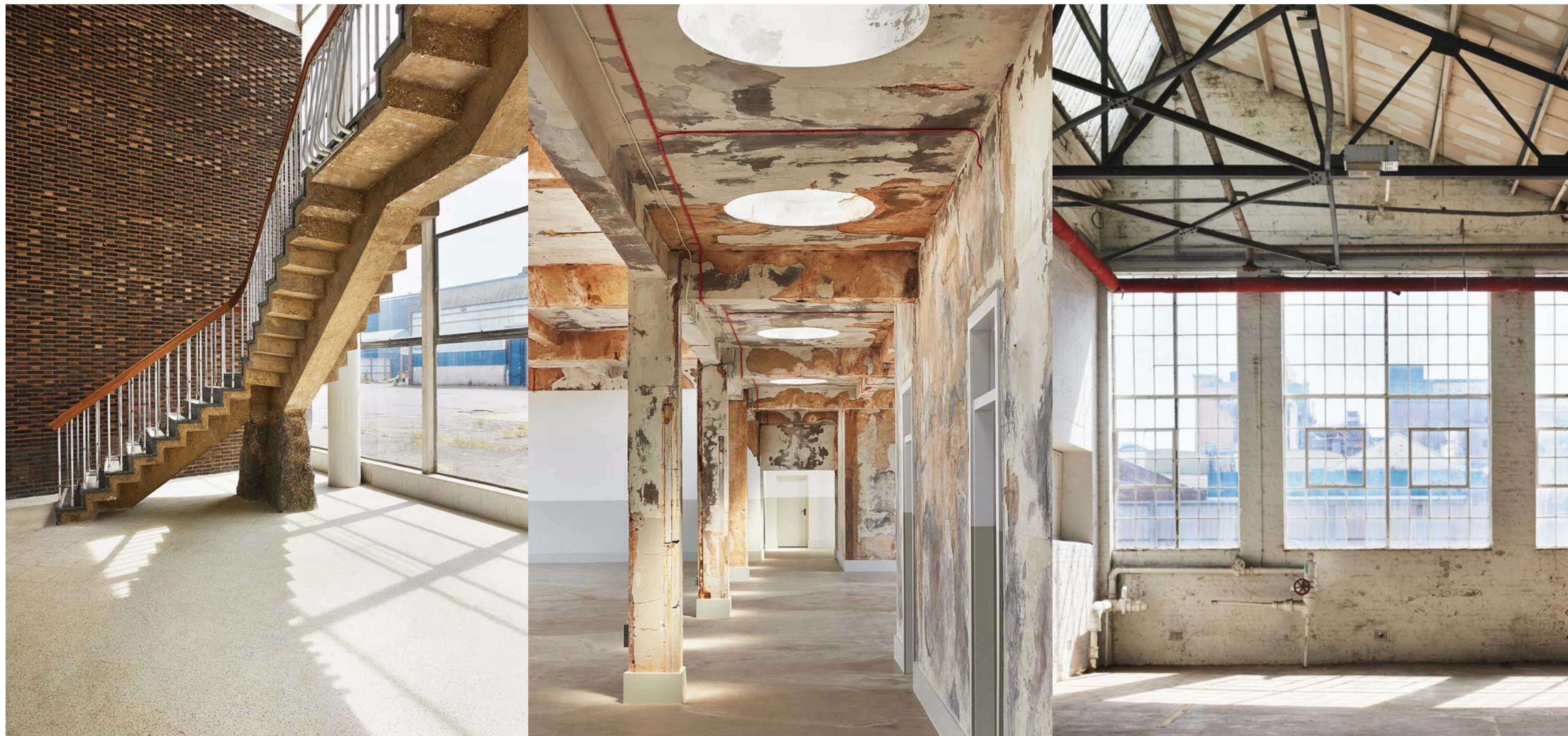
*Green Room facilities are available on request

The Ground Floor



The First Floor





Space One

At almost 70 metres long and 35 metres wide, Space One is a spectacular warehouse-style space with an authentic industrial character.

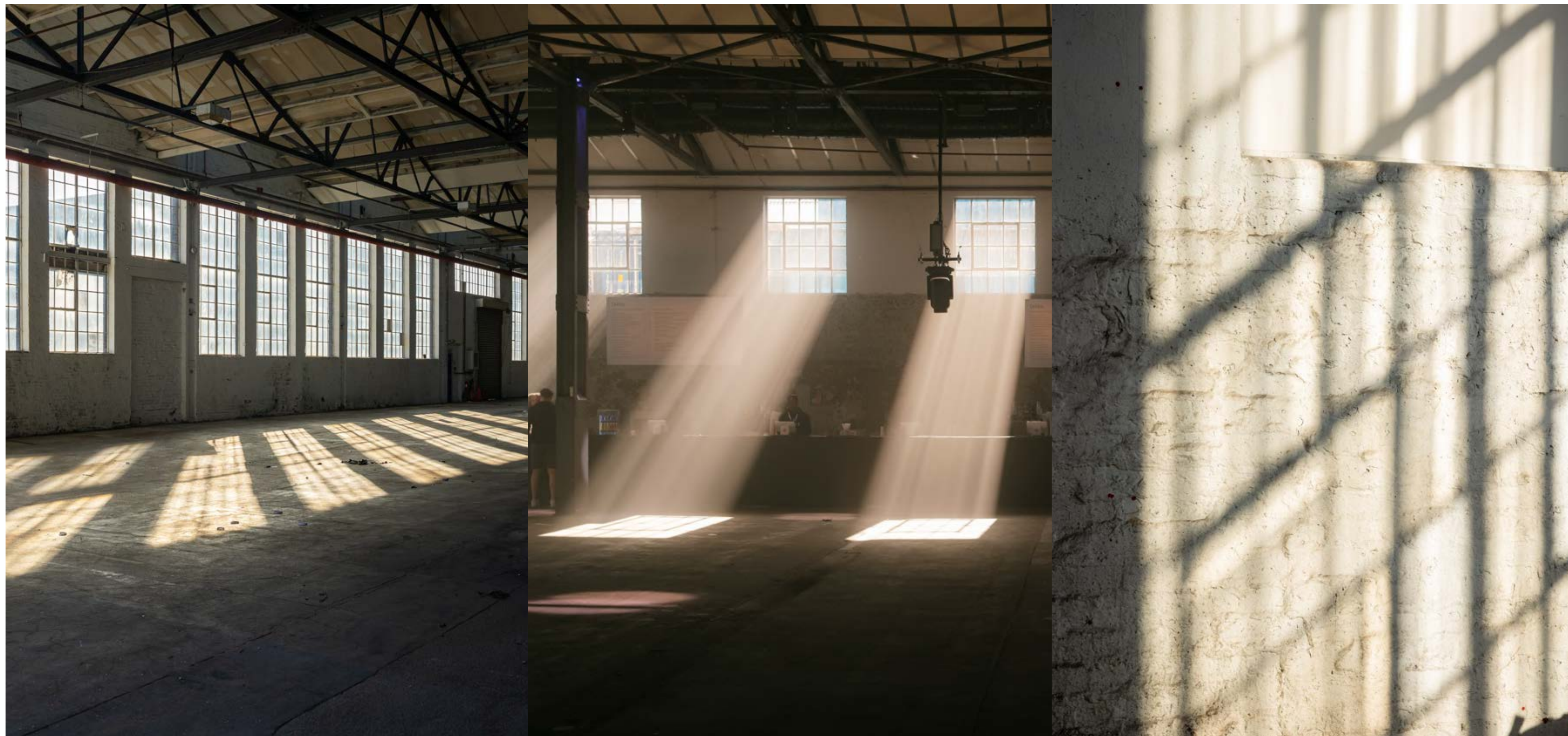
Original features include exposed full-length industrial style windows, brick walls, concrete floors and metal pillars, providing an inspiring industrial canvas for photoshoots, filming and events. Alternatively, the space can be fully transformed and is perfect for large set builds, immersive experiences, exhibitions and music.

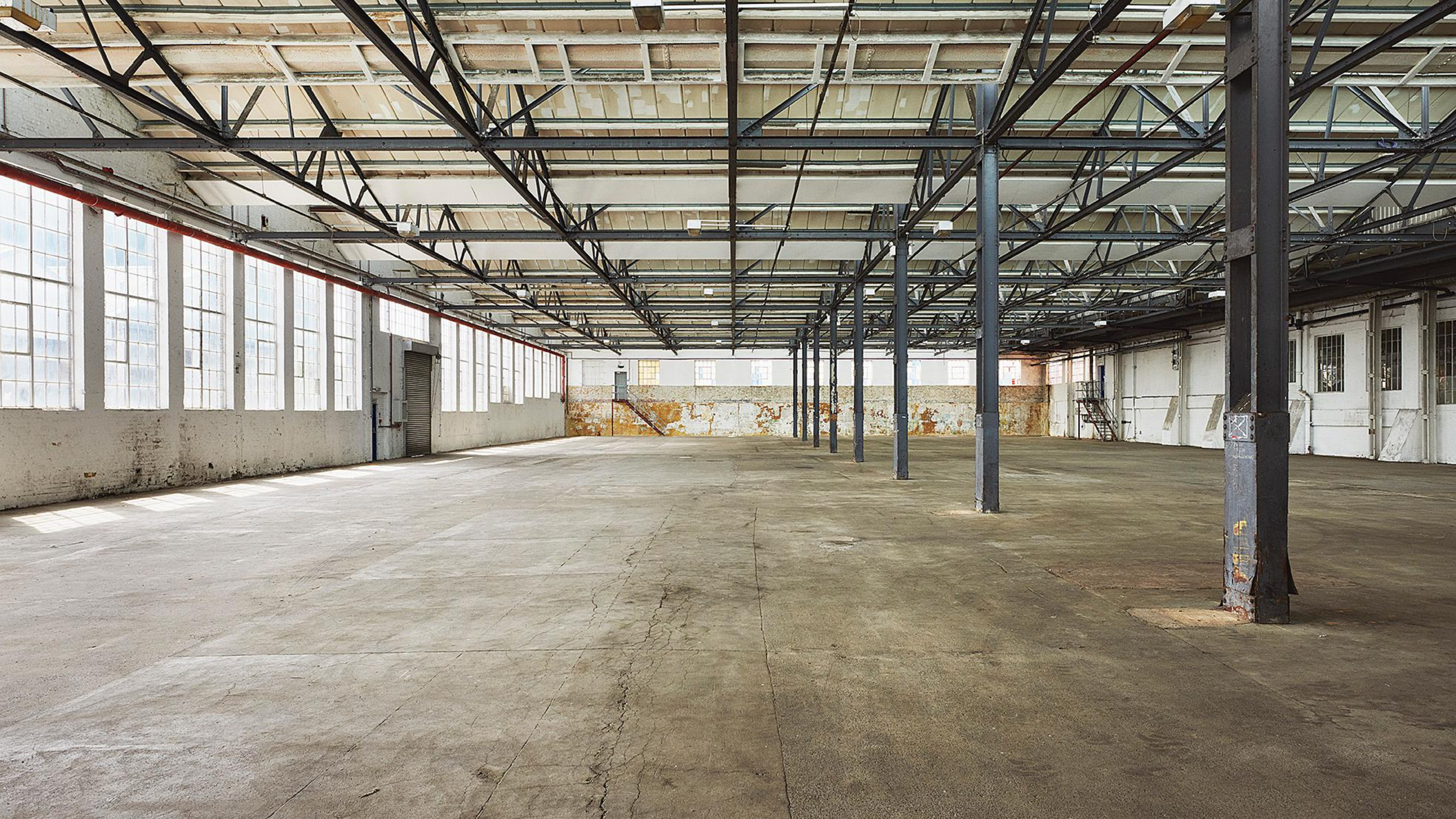
Area:
2,468 sq. m

Dimensions:
L: 68.4m
W: 36.6m
H: 6.5m

Capacities:
Standing: 4,000
Theatre: 2,652
Dinner 1,810
Cabaret: 1,086

*Capacities may vary subject to seating, production and activities.





Courtyard and The Front Yard

The Courtyard offers nearly 900 square metres of outdoor space, providing the ideal urban backdrop for festival style events featuring street food vendors.

The venue's exceptionally large outdoor space is secure and gated, with easy access from the interior rooms. This fully flexible, open-air space is perfect for summer parties, festivals, markets and outdoor activations.

The Front Yard is suitable for large-scale unit bases and conveniently located close to the venue entrance, providing great connectivity to the main building for larger, site-wide productions.

Area:
Courtyard:
893 sq. m

The Front Yard:
5,326 sq. m

Capacities:
Courtyard:
Standing: 1,000

*Capacities may vary
subject to seating,
production and





Hire of The Beams London

Total Venue Hire: Space One and The Courtyard
Day: £15,000 per day
Build or De-rig Day: £7,500 per day

Inclusions:

- Access to Space One and The Courtyard

- Hire from 07:00 - 07:00 the following morning (24- hour)
- Live Event access until 23:00
- Access to six green room/office spaces
- Basic wi-fi for event organisers

Additions:

- Switch-on fee for in-hour rig available on request. State-of-the-art lighting and sound package, including in-house stage; quote available on request. Available from September - December.
- Additional access is available in The Front Yard (5,326 sq. m of external space); quote available on request

Please note that a £10,000 refundable damage deposit is payable and refundable post-hire period upon a pre and post-schedule of condition.



Additional Costs

Venue Manager:

To be present for every day of occupancy charged at £50+VAT per hour outside of working hours, capped at £350+VAT per 12hr day, £500+VAT per 15hr day, £700+VAT per 16hr+day. There will be additional charges for bank holidays.

Technical Production, Rigging & Power:

Vibration Design and Production are our in-house supplier who can deliver all elements of technical production for you. VDP need to deliver all rigging, power, distro, and trussing and any reconfiguration of the in-house kit. If an alternative production supplier is to be used, a buyout fee of £3,000+VAT is applicable to VDP, plus a 10% commission payable to the venue.

Security:

- Supervisors are charged at £25 per hour.
- SIA Guards are charged at £21 per hour.

Provision will be dependent on the build, layout, capacity and schedule of the event.

Event & Traffic Marshals:

- Supervisor charged at £23.50 per hour.
- Traffic Marshal charged at £16.50 per hour.
- Event Stewards are charged at £14.50 per hour. If required, Marshals may be required to direct guests from the station depending on capacity and event plans. This will be agreed upon with your venue contact and their provider.

Additional Costs

Catering:

The Beams has a selection of accredited caterers. On occasion, the venue permits external caterers (subject to approval). For non-accredited caterers, a 10% commission on the total F&B spend is payable to the venue.

Health & Safety :

H&S/EMP review is charged at £450 per submission.

Cleaning & Waste Management:

Live event cleaners are charged £17.60 per hour. Waste disposal is the responsibility of the Hirer and can be facilitated by the Venue's cleaning and waste contractor.

Wi-Fi :

Quote available via Noba.

Event Medic :

Medic charged at £22 per hour. Additional Infrastructure : Toilet cabins, cloakroom and event marquees – quote available on request.

PRS :

Dependent on live and recorded music plans.

All prices quoted are exclusive of VAT.



